



ADVANCING INTEGRATED HEALTHCARE

Welcome PCMH Kids Practices and Key Stakeholders

PCMH KIDS STAKEHOLDER MEETING 04-01-2021

PAT FLANAGAN MD, FAAP, PCMH KIDS CO-CHAIR

BETH LANGE MD, FAAP, PCMH KIDS CO CHAIR

Agenda

- ❖ Welcome & Opening Remarks
- ❖ Open Discussion/Reflections on Pediatric Alternative Payment Model Learning Session
- ❖ Update on PCMH Kids Cohort 3
- ❖ Well Child / Immunization Rates Discussion
- ❖ Healthcare Transitions – Call for Applications



Open Discussion/Reflections

Pediatric Alternative Payment Model Learning Session

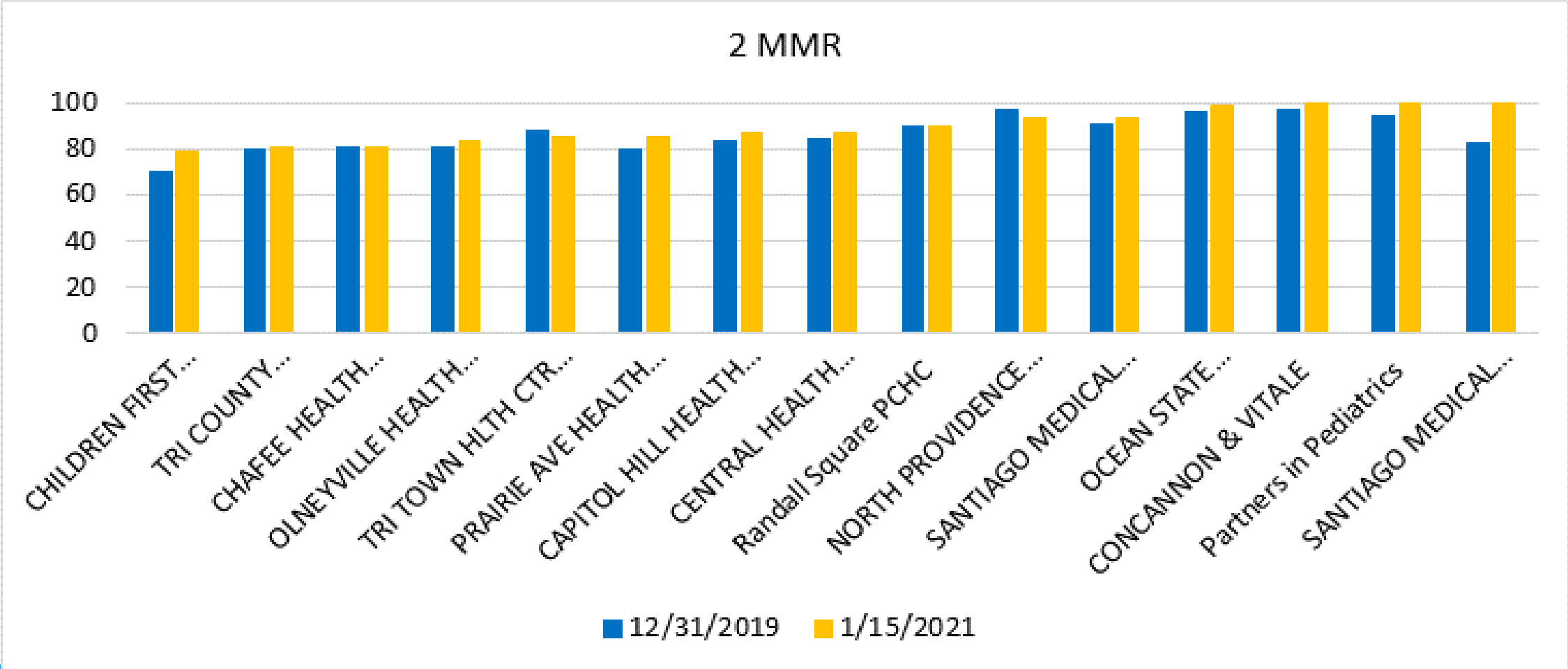


PCMH Kids Cohort 3 Year 2 Incentive Plan

- PCMH Kids Cohort 3: Incentive Payment

- Alternative Incentive Payment – Year 2 only
 - Following OHIC’s guidance, practices continue to report clinical quality measures (with no incentive targets to meet) and deliver on other deliverables outlined on the CTC-RI/PCMH Kids milestone document.
 - In lieu of CAHPS survey & ED Utilization, PCMH Kids Cohort 3 would receive performance improvement incentive (\$0.50 pmpm) based on developing, implementing and meeting deliverables identified in the Quality Improvement Immunization Work Plan.
 - Incentive payment 75% upfront; 25% for meeting goal
 - Goal: MMR immunization for school age children with 10% prior year by December 31, 2020 (using 1/15/2021 KIDSNET data). Adolescent Medicine may need to target adolescent immunizations for incentive payout.

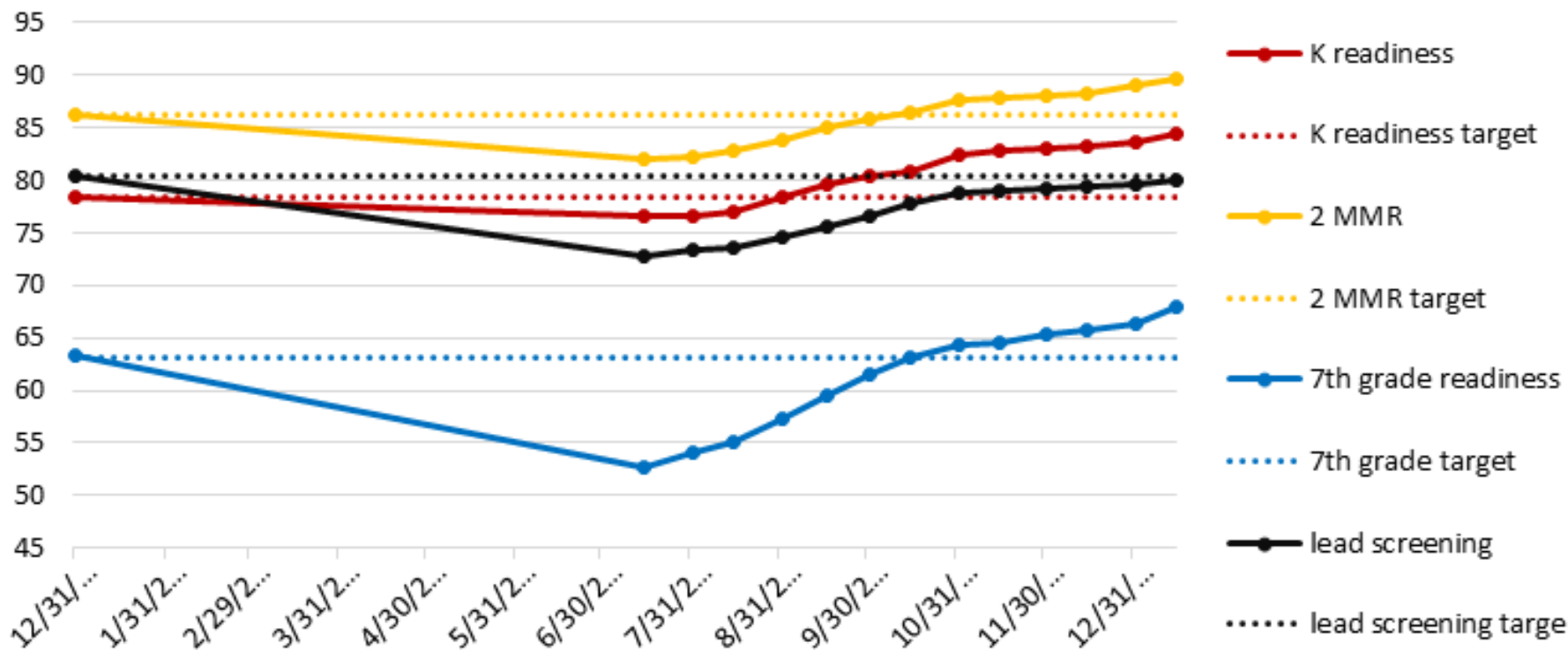
Update on PCMH Kids Cohort 3



Update on PCMH Kids Cohort 3 In addition and despite the pandemic...



Immunization and Lead Screening results over time compared to 12/31/2019 results



PCMH Kids Cohort 3 practices submitted PDSAs for improving Immunization rates and worked tirelessly to get children in for their well child visits and improve immunization rates in Rhode Island. This graph shows the progress PCMH Kids Cohort 3 made over the year.

Update on PCMH Kids Cohort 3

In addition and despite the pandemic...



- Submitted patient questionnaires to find out what would be helpful for parents to bring their child into the practice for well child/immunization visits.
- Submitted clinical quality data, quarterly.
- Attended key CTC meetings such as Practice Reporting / Transformation, NCM/CC Best Practice Sharing, Breakfast of Champions, PCMH Kids Stakeholder
- Met with practice facilitators monthly to work on quality improvement initiatives
- And worked towards PCMH

**Health Plans were notified on March 16th
Practices should receive final 1/3 incentive payment within 60 days.**

OHIC 2021-2022 Clinical Quality Requirements

[December 2020 CTC/OHIC Measure Specifications](#)

[Final 2021 PCMH Measure Set and Review of Practice Performance from the 2020 PCMH Measures Survey](#)

Measures for Pediatric Practices		
Measure	2021 Benchmark	Benchmark Source
Child and Adolescent Well-Care Visits (adolescent age ranges only)	Commercial: 76.15% Medicaid: 54.79%	<i>Commercial:</i> New England commercial 90th percentile <i>Medicaid:</i> National commercial 75th percentile
Developmental Screening in the First Three Years of Life	69.98%	2018 performance year benchmark (i.e., 25th RI percentile from 10/1/2016 – 9/30/2017)
Lead Screening in Children	TBD after OHIC obtains data from RIDOH	TBD after OHIC obtains data from RIDOH

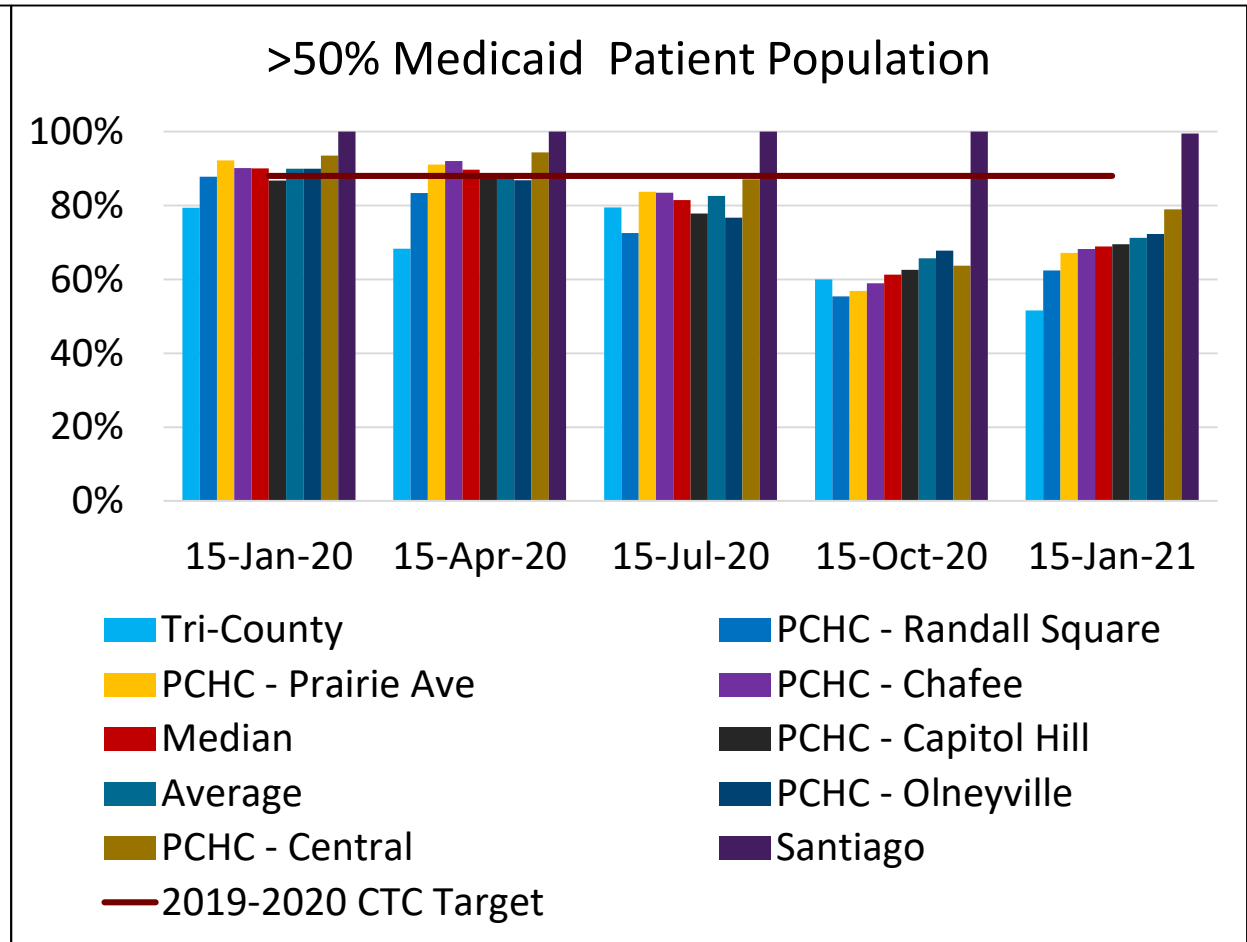
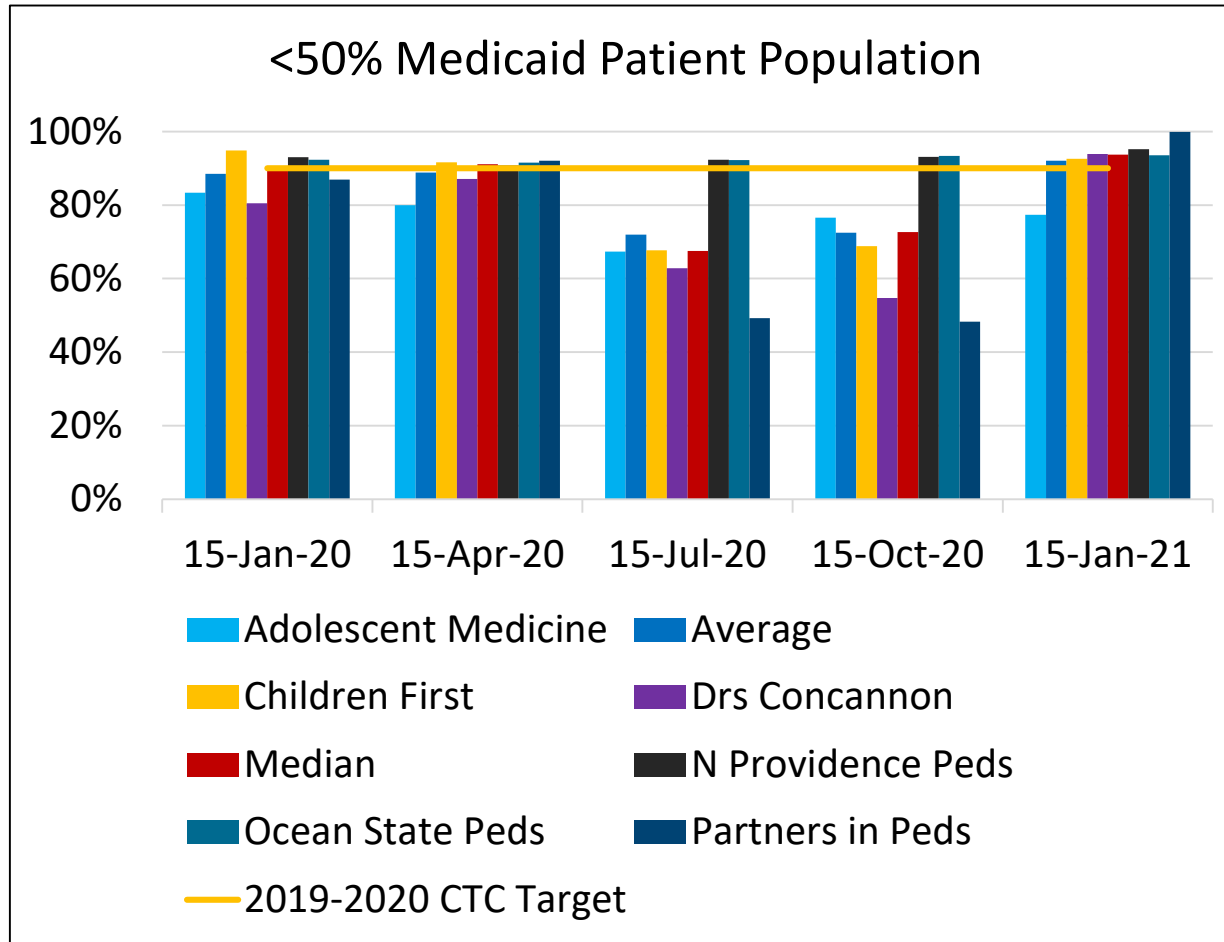
* Or demonstrates improvement (3% improvement not required)

* BMI not included in Pediatric Measurement Set

Final Year Incentive Payment Recommendations will be discussed at April 15th Data and Evaluation Committee meeting

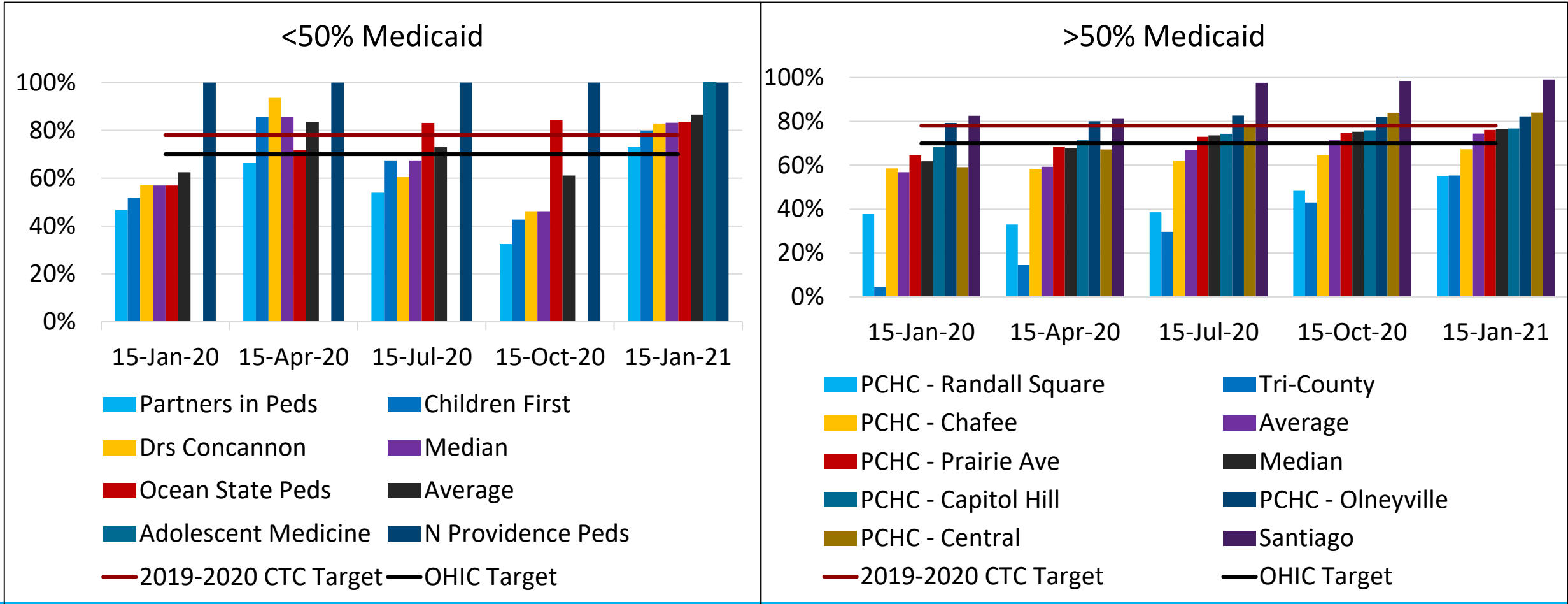
PCMH Kids Cohort 3

Looking towards final contract year – BMI



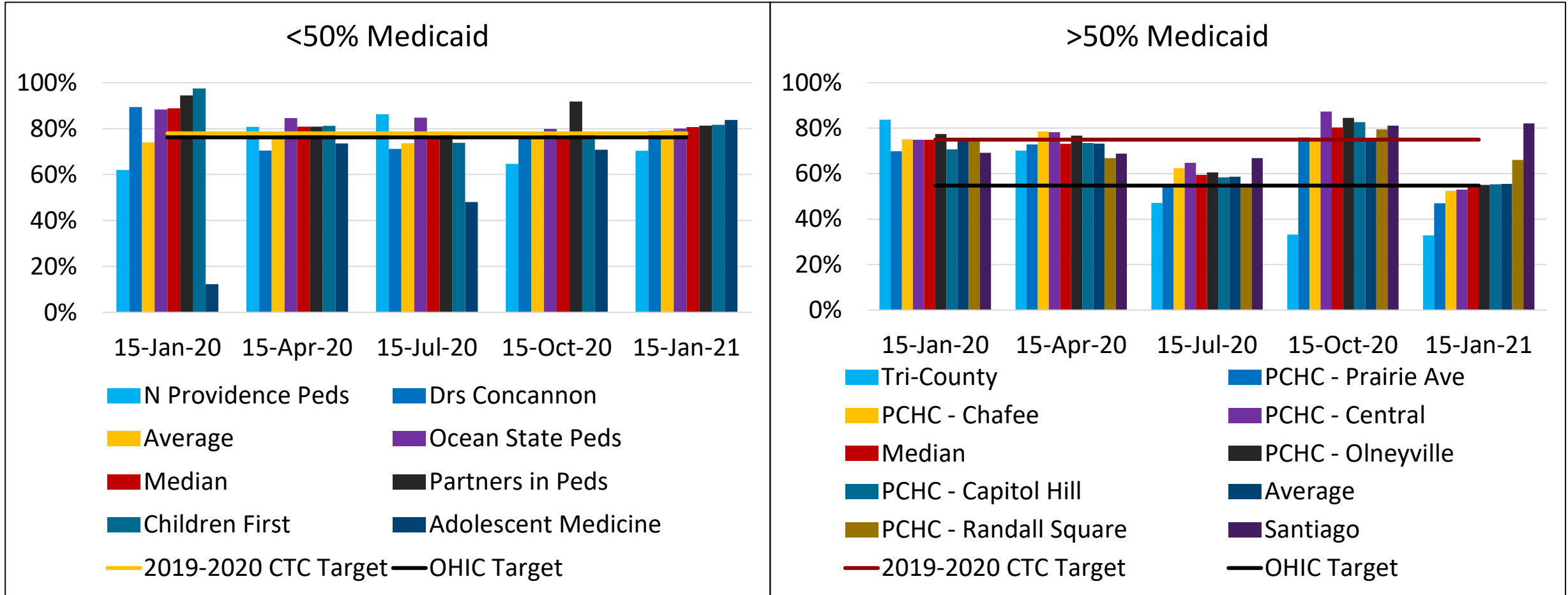
PCMH Kids Cohort 3

Looking towards final contract year – Developmental Screening



PCMH Kids Cohort 3

Looking towards final contract year – Well Child



Immunization - Kindergarten Readiness

	Dec-19			Feb 15, 2021 (Cohort 1) eligible to enter K on 8/31/2020, DOBs: 9/1/2014 – 8/31/2015			Feb 15, 2021 (Cohort 2) eligible to enter K on 8/31/2021, DOBs: 9/1/2015 – 8/31/2016		
	# children in K range	# children meeting K requirements	% in K range meeting K requirement	# children in K range	# children meeting K requirements	% in K range meeting K requirement	# children in K range	# children meeting K requirements	% in K range meeting K requirement
CHAFEE HEALTH CENTER - PCHC	252	183	72.62	254	186	73.23	180	77	42.78
TRI COUNTY COMMUNITY HEALTH	85	65	76.47	73	56	76.71	61	28	45.9
PRAIRIE AVE HEALTH CENTER- PCHC	365	274	75.07	354	282	79.66	354	175	49.44
Randall Square PCHC	80	63	78.75	121	96	79.34	101	55	54.46
CAPITOL HILL HEALTH CENTER - PCHC	198	157	79.29	208	169	81.25	229	134	58.52
TRI COUNTY HLTH CTR N PROVIDENCE	33	28	84.85	32	27	84.38	36	23	63.89
CENTRAL HEALTH CENTER - PCHC	248	204	82.26	219	182	83.11	235	153	65.11
CHILDREN FIRST PEDIATRICS	194	79	40.72	192	119	61.98	175	117	66.86
OLNEYVILLE HEALTH CENTER - PCHC	222	173	77.93	193	151	78.24	200	138	69
SANTIAGO MEDICAL GROUP PAWTUCKET	56	36	64.29	46	45	97.83	52	43	82.69
SANTIAGO MEDICAL GROUP N PROV	151	102	67.55	143	133	93.01	159	132	83.02
CONCANNON & VITALE	112	108	96.43	112	109	97.32	110	96	87.27
OCEAN STATE PEDIATRICS	419	398	94.99	477	468	98.11	373	339	90.88
Partners in Pediatrics	116	103	88.79	114	109	95.61	128	119	92.97
NORTH PROVIDENCE PEDIATRICS	29	28	96.55	31	29	93.55	36	34	94.44
ADOLESCENT HLTH CTR & CORO SPEC	0	0		0	0		0	0	

Immunization – 2 MMR

	Dec-19			Feb 15, 2021 (Cohort 1) eligible to enter K on 8/31/2020, DOBs: 9/1/2014 – 8/31/2015			Feb 15, 2021 (Cohort 2) eligible to enter K on 8/31/2021, DOBs: 9/1/2015 – 8/31/2016		
	# children in K range	# in K range with 2 MMR	% in K range with 2 MMR	# children in K range	# children meeting K requirements	% in K range meeting K requirement	# children in K range	# children meeting K requirements	% in K range meeting K requirement
TRI COUNTY COMMUNITY HEALTH	85	68	80	73	59	80.82	61	31	50.82
CHAFEE HEALTH CENTER - PCHC	252	203	80.56	254	207	81.5	180	92	51.11
PRAIRIE AVE HEALTH CENTER- PCHC	365	291	79.73	354	301	85.03	354	191	53.95
CAPITOL HILL HEALTH CENTER - PCHC	198	165	83.33	208	182	87.5	229	149	65.07
TRI COUNTY HLTH CTR N PROVIDENCE	33	29	87.88	32	28	87.5	36	25	69.44
Randall Square PCHC	80	72	90	121	111	91.74	101	71	70.3
CENTRAL HEALTH CENTER - PCHC	248	209	84.27	219	191	87.21	235	166	70.64
OLNEYVILLE HEALTH CENTER - PCHC	222	178	80.18	193	163	84.46	200	147	73.5
CHILDREN FIRST PEDIATRICS	194	136	70.1	192	151	78.65	175	139	79.43
SANTIAGO MEDICAL GROUP PAWTUCKET	56	46	82.14	46	46	100	52	45	86.54
SANTIAGO MEDICAL GROUP N PROV	151	137	90.73	143	134	93.71	159	139	87.42
CONCANNON & VITALE	112	109	97.32	112	112	100	110	98	89.09
OCEAN STATE PEDIATRICS	419	404	96.42	477	471	98.74	373	341	91.42
Partners in Pediatrics	116	109	93.97	114	114	100	128	122	95.31
NORTH PROVIDENCE PEDIATRICS	29	28	96.55	31	29	93.55	36	35	97.22
ADOLESCENT HLTH CTR & CORO SPEC	0	0		0	0		0	0	

Immunization – 7th Grade Readiness

	Dec-19			Feb 15, 2021 (Cohort 1) age eligible for 7th grade on 8/31/2020, DOBs: 9/1/2007 – 8/31/2008			Feb 15, 2021 (Cohort 2) eligible to enter K on 8/31/2021, DOBs: 9/1/2015 – 8/31/2016		
	# children in 7th grade DOB range	# meeting 7th grade requirement	% meeting 7th grade requirement	# children in 7th grade DOB range (Cohort 1)	# meeting 7th grade requirement (Cohort 1)	% meeting 7th grade requirement (Cohort 1)	# children in 7th grade DOB range (Cohort 2)	# meeting 7th grade requirement (Cohort 2)	% meeting 7th grade requirement (Cohort 2)
CHILDREN FIRST PEDIATRICS	250	145	58	242	143	59.09	245	26	10.61
CENTRAL HEALTH CENTER - PCHC	266	140	52.63	253	121	47.83	282	73	25.89
TRI COUNTY COMMUNITY HEALTH	83	49	59.04	87	50	57.47	81	21	25.93
PRAIRIE AVE HEALTH CENTER- PCHC	295	171	57.97	285	168	58.95	317	88	27.76
OLNEYVILLE HEALTH CENTER - PCHC	268	122	45.52	304	162	53.29	276	78	28.26
CHAFEE HEALTH CENTER - PCHC	258	107	41.47	247	117	47.37	270	78	28.89
CAPITOL HILL HEALTH CENTER - PCHC	275	130	47.27	284	129	45.42	276	99	35.87
Randall Square PCHC	89	57	64.04	124	79	63.71	104	42	40.38
TRI TOWN HLTH CTR N PROVIDENCE	33	26	78.79	35	29	82.86	29	12	41.38
SANTIAGO MEDICAL GROUP PAWTUCKET	71	38	53.52	70	59	84.29	63	30	47.62
NORTH PROVIDENCE PEDIATRICS	41	33	80.49	36	33	91.67	38	19	50
CONCANNON & VITALE	85	76	89.41	84	81	96.43	95	49	51.58
Partners in Pediatrics	92	71	77.17	97	87	89.69	94	58	61.7
ADOLESCENT HLTH CTR & CORO SPEC	3	2	66.67	6	3	50	6	4	66.67
SANTIAGO MEDICAL GROUP N PROV	187	112	59.89	186	161	86.56	184	127	69.02
OCEAN STATE PEDIATRICS	409	326	79.71	375	325	86.67	421	305	72.45

Immunization – Lead Screening

	Dec-19			Feb 15, 2021 (Cohort 1) between 12 and 24 months of age as of December 31, 2019 with at least one lead screen, DOBs: 1/1/2018 - 12/31/2018			Feb 15, 2021 (Cohort 2) between 12 and 24 months of age as of December 31, 2020 with at least one lead screen, DOBs: 1/1/2019 - 12/31/2020		
	# children 12-24mo on 12/31/19	# with at least one lead screen	% with at least one lead screen	# children 12-24mo on 12/31/19 (Cohort 1)	# with at least one lead screen (Cohort 1)	% with at least one lead screen (Cohort 1)	# children 12-24mo on 12/31/20 (Cohort 2)	# with at least one lead screen (Cohort 2)	% with at least one lead screen (Cohort 2)
NORTH PROVIDENCE PEDIATRICS	25	11	44	28	11	39.29	24	11	45.83
Partners in Pediatrics	123	93	75.61	160	98	61.25	140	70	50
TRI COUNTY COMMUNITY HEALTH	63	54	85.71	33	25	75.76	28	15	53.57
CHILDREN FIRST PEDIATRICS	148	94	63.51	153	97	63.4	140	79	56.43
Randall Square PCHC	67	53	79.1	110	89	80.91	86	54	62.79
OLNEYVILLE HEALTH CENTER - PCHC	193	161	83.42	159	134	84.28	172	110	63.95
CHAFEE HEALTH CENTER - PCHC	202	166	82.18	183	155	84.7	207	135	65.22
PRAIRIE AVE HEALTH CENTER- PCHC	370	333	90	362	301	83.15	383	257	67.1
TRI TOWN HLTH CTR N PROVIDENCE	24	20	83.33	53	51	96.23	48	33	68.75
CONCANNON & VITALE	124	104	83.87	103	93	90.29	96	68	70.83
OCEAN STATE PEDIATRICS	335	290	86.57	424	355	83.73	324	232	71.6
CAPITOL HILL HEALTH CENTER - PCHC	236	205	86.86	218	191	87.61	204	148	72.55
CENTRAL HEALTH CENTER - PCHC	233	213	91.42	212	192	90.57	228	182	79.82
SANTIAGO MEDICAL GROUP N PROV	136	113	83.09	124	115	92.74	116	97	83.62
SANTIAGO MEDICAL GROUP PAWTUCKET	67	59	88.06	49	45	91.84	62	56	90.32
ADOLESCENT HLTH CTR & CORO SPEC	0	0		0	0		0	0	

Health Care Transitions: Pediatric to Adult Care Call for Applications

Improve the transition of medical care from Pediatric to Adult Care

- Six primary care practices
 - 3 pediatric and 3 adult/family practices.
- Infrastructure Payments - \$5,000
- On-site Practice Quality Improvement Coaching
- Quarterly Peer Learning Collaborative Opportunities
- National Technical Assistance

Step	Activity	Date
1	Call for Applications released	April 1, 2021
2	Conference call with interested parties to answer any questions. https://ctc-ri.zoom.us/j/7450410870?pwd=ZzFYVU1HcVljdE1sZ2ZNR2w3WWlJdz09 Meeting ID: 745 041 0870 Passcode: 646876 One tap mobile: +13017158592,,7450410870#,,,,*646876#	April 9, 2021 8:00-8:30AM
3	Submit Letter of Intent (optional)	April 16, 2021
4	Submit application electronically to: deliverables@ctc-ri.org	April 22, 2021
5	Notification will be sent to practices	May 7, 2021
6	Orientation Kick Off meeting for newly selected practices	May 27, 2021, 7:30-9:00AM



ADVANCING INTEGRATED HEALTHCARE

Stay Safe and Healthy
