



ADVANCING INTEGRATED HEALTHCARE

Advancing Integrated Primary Care: Innovations at Work

CARE TRANSFORMATION COLLABORATIVE OF RHODE ISLAND
DEBRA HURWITZ, MBA, BSN, RN - EXECUTIVE DIRECTOR CTC-RI
OCTOBER 24, 2019



The Commonwealth Fund

Hot off the press

Rhode Island: Most-Improved State in Health Performance

How Rhode Island Has Made Major Gains in Health Care



Rhode Island has one of the **best-performing health systems in the country, ranking seventh overall** in the Commonwealth Fund's 2019 Scorecard on State Health System Performance. It also has the **most improved** health system of any state.



country, rd on ealth

In a new *To the Point* post, Michelle Alletto of the Milbank Memorial Fund and Rhode Island health insurance commissioner Marie Ganim discuss the steps the state took to lower its uninsured rate from 17 percent to 6 percent between 2013 and 2017 and to reduce fatal opioid overdoses among people leaving prison by 60 percent from 2016 to 2017.

Such dramatic improvements did not happen by chance, the authors say. As they explain, change started with the state's commitment to expanding access to affordable health coverage and to providing mental health services to those needing them most.

Source:

<https://www.commonwealthfund.org/blog/2019/rhode-island-most-improved-state-health-performance>

A Culture of Collaboration



Welcome New Pediatric Practices

PCMH Kids Cohort 3



Children First Pediatrics

Divisions of Adolescent Medicine, RI Hospital

Drs Concannon & Vitale LLC

North Providence Pediatrics

Ocean State Pediatrics

Partners in Pediatrics

Providence Community Health Center - Capitol Hill

Providence Community Health Center – Central

Providence Community Health Center – Chafee

Providence Community Health Center - Olneyville

Providence Community Health Center - Prairie Ave

Providence Community Health Center - Randall Sq

Riverside Pediatrics

Santiago Medical Group - North Providence

Santiago Medical Group - Pawtucket

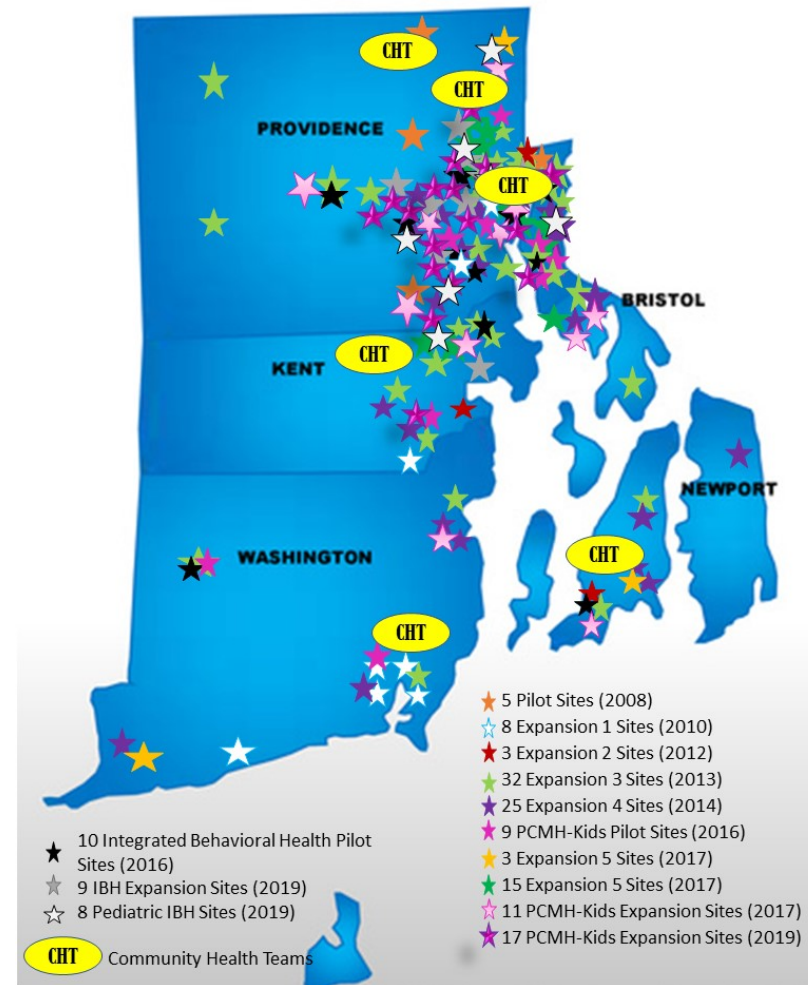
Tri-County CAA - Johnston

Tri-County CAA – N Providence

Expanding Primary Care Impact

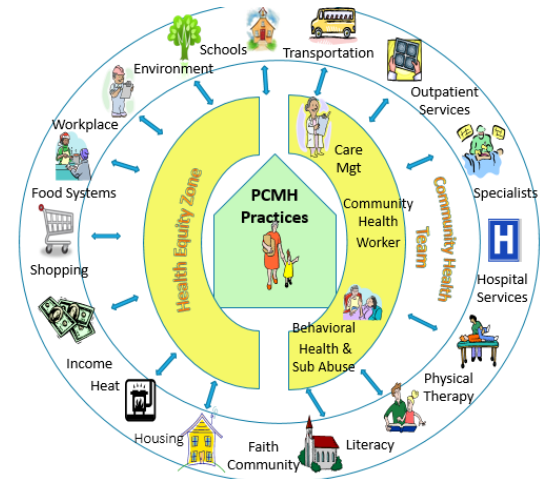
The Care Transformation Collaborative of Rhode Island has a growing impact across the state, and includes:

- **128 primary practices**, including internal medicine, family medicine, and pediatric practices.
- **800 providers** across our adult and pediatric practices.
- 27 primary care practices are part of Integrated Behavioral Health initiative
- Approximately **700,000 Rhode Islanders** receive their care in a patient-centered medical home.
- Investment from **every health insurance plan** in Rhode Island, including private and public plans.
- **All Federally Qualified Health Centers** in Rhode Island participate in our Collaborative



Innovations: Community Health Teams

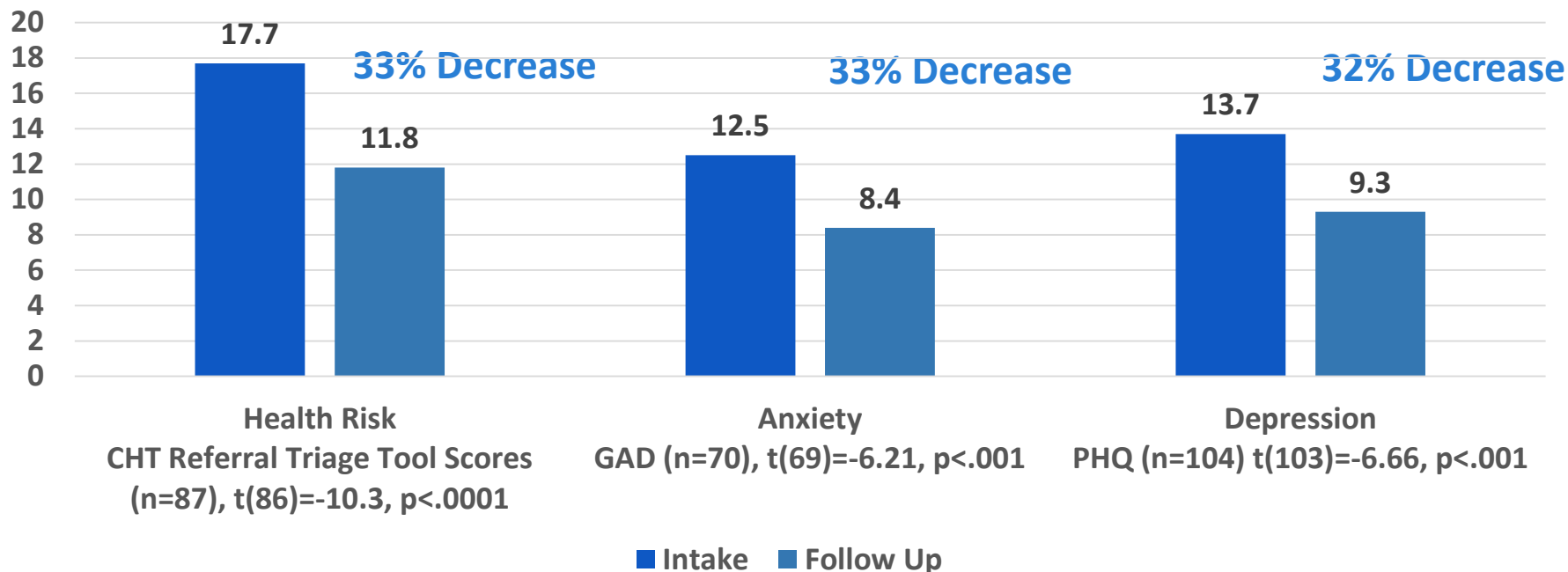
- Extension of Primary Care
- Geographically-based Teams
 - **32 practices** across the state have referring relationships with Community Health Teams
 - **326 providers** across all partnering practices have referring relationships with Community Health Teams
- Use care management processes to address
 - Social determinants of health needs
 - Behavioral health/SUD needs
 - Health education needs
 - Physical health needs
- CHT CHW & BH clinicians outreach to high-risk patients referred by Primary Care; they assess and address social and behavioral health needs of patients



Innovations: Community Health Teams

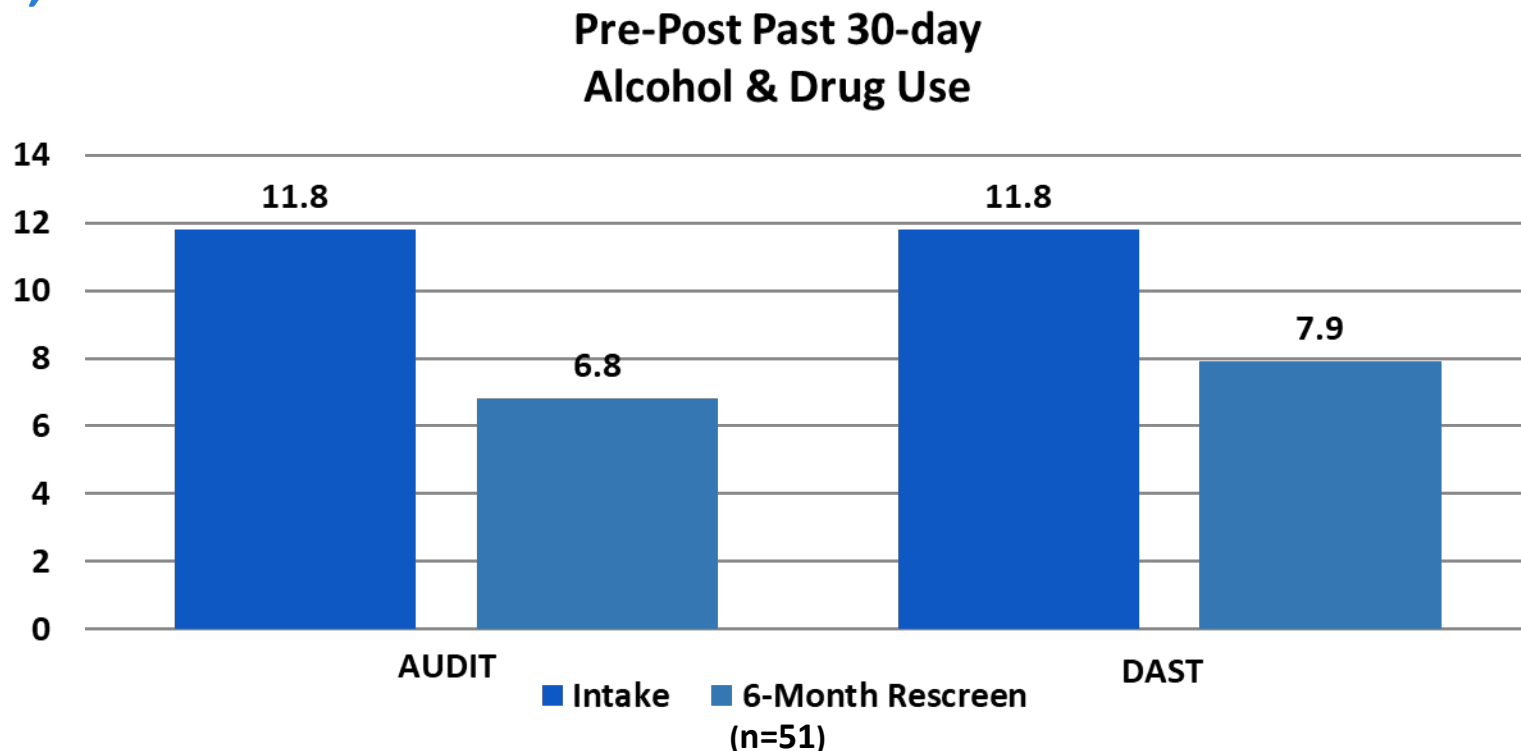
2019 analysis shows clinically and statistically significant reductions in patient health risk, depression, and anxiety after less than 5 months in care

Follow-up Changes in Health Risk, Anxiety & Depression



Innovations: Community Health Teams

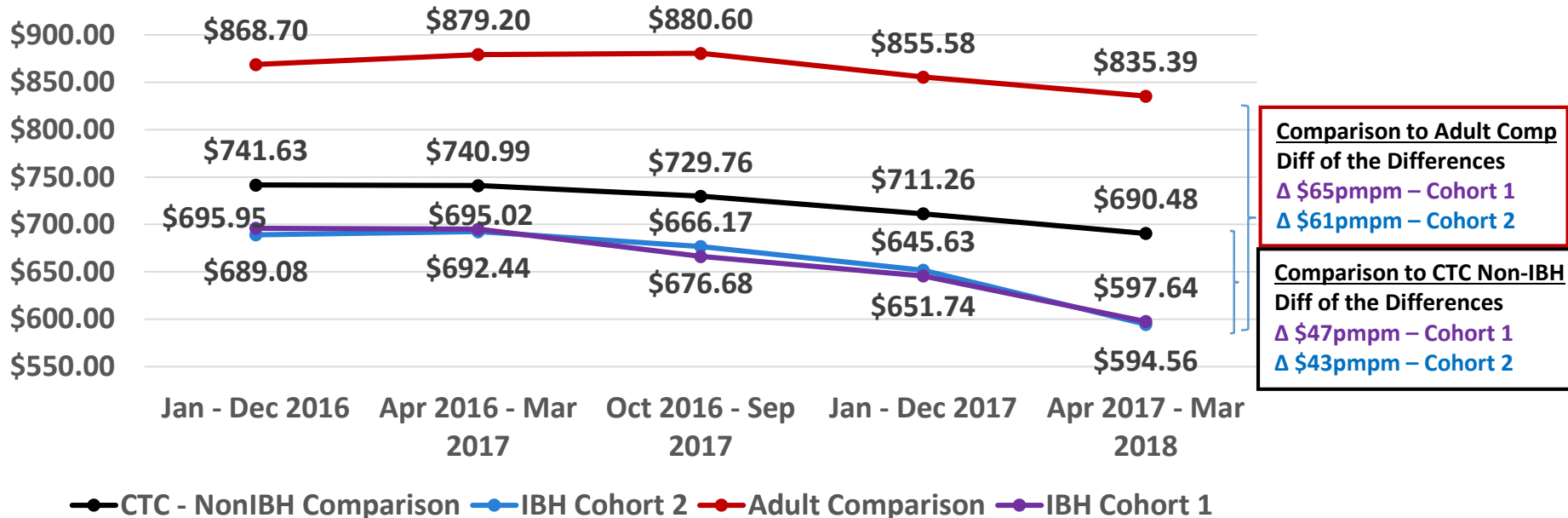
Addressing the state's opioid crisis by normalizing conversations around substance and alcohol use. **53% reported no illegal drug use, 6-months later.**



Innovations: Integrated Behavioral Health

“I mean, when I say how much I love having integrated behavioral health, is that I can't imagine primary care without it...” *(Medical Provider)*

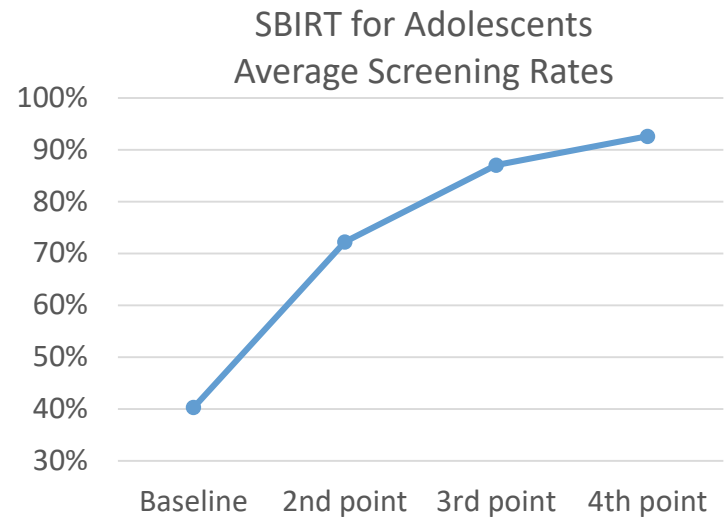
Total Medical & Pharmacy Costs (with Exclusions) (Ages 18+,
Cost per Member-Month)



Behavioral Health Success in PCMH Kids

2018-19 Integrated Behavioral Health Pediatric Learning Collaborative on Screening, Brief Intervention, and Referral to Treatments (SBIRT) for adolescents

- **11 Practices enrolled in the learning collaborative**
- **Consisting of 75 Providers**
- **Total pediatric population of ~34,000**
- **Over 60 in attendance at final meeting where Adolescent Substance Use and Confidentiality were the topics of focus**



Innovations: Integrated Behavioral Health

Thanks to our funding partners



- **Adult expansion - 9 practices**
 - Introducing a SDOH component to the program
- **Ground breaking expansion into pediatrics - 8 practices**
- **Expanded IBH Practice Facilitation Services - Integra and Wood River**
- **Workforce Development**
 - 5 Practice Facilitators specifically trained within IBH in Primary Care
 - Expanded reach through web-based training; **coming in 2020**

Looking forward...

- **Enhance Community Health Teams**
- **Expand Integrated Behavioral Health**
- **Expand our services to families affected by substance use disorders**
- **Improve primary care/specialist collaboration**
- **Reduce Low-Value Care**
- **Improve Clinician (and Care Team) Well-being**
- **Explore/pilot telemedicine program**

Thank You!