

# New Online Integrated Behavioral Health (IBH) Practice Facilitation Training Program being offered

## WHO SHOULD APPLY?

Behavioral Health Clinicians (Psychologists, Therapists, Social Workers, Nurses) interested in helping organizations and primary care teams develop their skills and processes to integrate behavioral health services into their practice environment are encouraged to apply. The course is ideally designed for any clinician or nurse who has worked in a behavioral health setting and has experience integrating behavioral health within primary care that wishes to advance their career to become an integrated behavioral health practice facilitator.

## What you can expect:

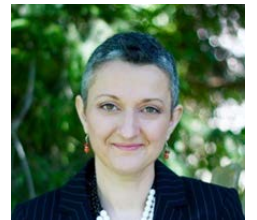
- Participants will receive a reference manual with course readings
- 4 online training modules for self-study with reading and homework assignments
- Module post-tests to help participants understand level of comprehension
- Monthly calls with Dr. Burdette, CTC's Senior IBH program leader and course Instructor
- Continuing social work education credits, approval pending by NASW for 7 CEU credits
- Approximately 24-hour time commitment

**Cost for Foundational Course:** \$750 for CTC members; \$1000 for out of state

**Advanced: Onsite IBH Shadowing (Optional)** Highly recommended and unique add-on to the course includes a live shadowing component in which Dr. Burdette schedules your organization for an initial practice facilitation session with the course participant observing and then a follow-up practice facilitation session with Dr. Burdette shadowing the course participant. Shadowing rate is currently available to Rhode Island only, but please inquire if interested in out-of-state shadowing. Schedule to be arranged with Dr. Burdette.

**Additional Cost for Onsite IBH Shadowing:** \$750

**Instructor:** Nelly Burdette, Psy.D., Senior Integrated Behavioral Health Program Leader, Care Transformation Collaborative-Rhode Island (CTC-RI). Dr. Nelly Burdette has more than 15 years' experience within integrated behavioral health clinical and leadership positions. She has created Integrated care programs at federally-qualified health centers, community mental health centers, and the Veteran's Administration for pediatric, family medicine and adult populations. From positions in senior leadership to providing clinical services embedded within medical practices, she has provided integrated behavioral health training and supervision to interdisciplinary medical teams. In her current roles, Dr. Burdette is the Associate Vice President of Integrated Behavioral Health at Providence Community Health Centers, the largest federally qualified health center in Rhode Island and serves in both a leadership and clinical role. She has also been serving as a senior content expert and integrated behavioral health practice facilitator for CTC-RI for the past 4 years.



**Next Course Available:** March, 2020 (space limited)    **Applications and CVs/Resumes due by:** February 24, 2020  
Another Training program will be offered in the Fall, 2020.

**Note:** This training program assumes you already have an understanding of integrated behavioral health.

**For more information go to** [CTC-RI.org/integrated-behavioral-health](http://CTC-RI.org/integrated-behavioral-health) and click on the IBH Practice Facilitator Training section **or contact:** Carolyn Karner, CTC IBH & PCMH Kids Program Coordinator at [CTCIBH@ctc-ri.org](mailto:CTCIBH@ctc-ri.org) or 978-852-2250.

This online training program was made possible through generous funding from Tufts Health Plan.