



ADVANCING INTEGRATED HEALTHCARE

Welcome

**NURSE CARE MANAGER/COORDINATOR BEST PRACTICE SHARING MEETING
OCTOBER 19, 2021**

Agenda

Topics <i>Presenter(s)</i>	Duration
Welcome & Review of Agenda <i>Susanne Campbell , CTC-RI</i>	5 minutes
What is the Rhode Island Medical Home Portal? <i>Kathleen Kuiper, BS, CCHW, RIPIN Resource Coordinator</i>	15 minutes
Strength-based Screening for Health-related Social Needs Part 2: Theory to Practice <i>Marsophia Ducheine, Medical-Legal Partnership Boston</i>	70 minutes




Medical
Home
Portal

ri.medicalhomeportal.org

CTC-CARE MANAGER

October 19, 2021



WHAT IS THE RHODE ISLAND MEDICAL HOME PORTAL?

A one-stop shop to help families and professionals caring for children and youth with special needs



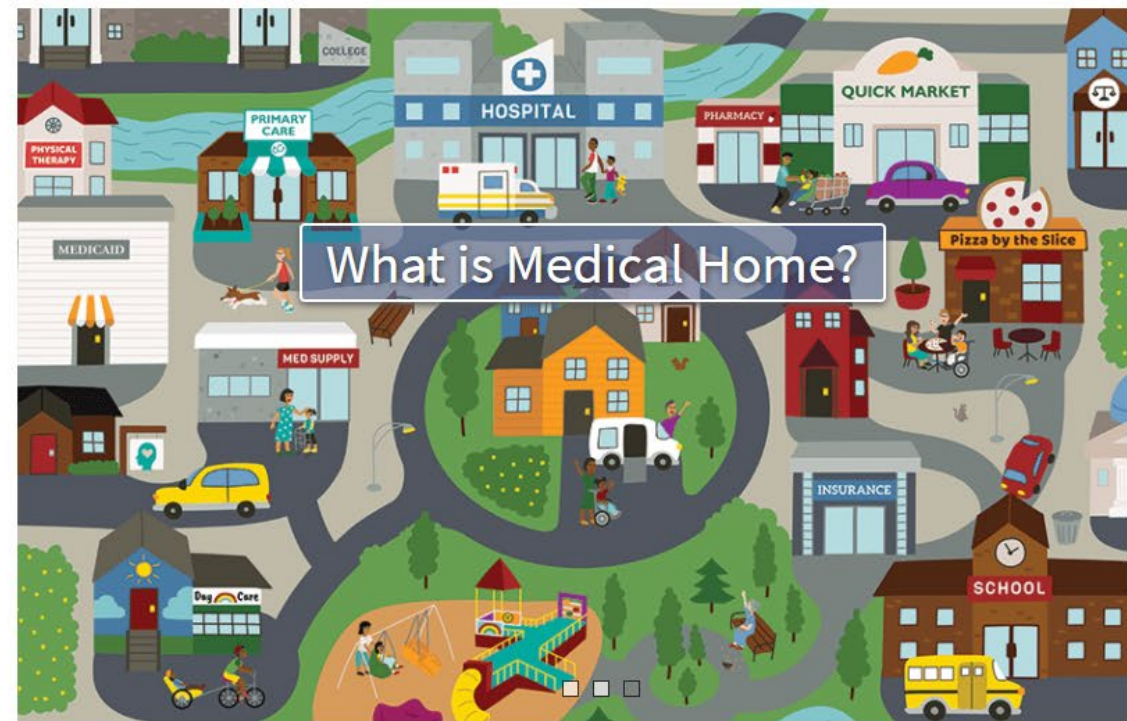
Rhode Island
RI is my home site

Search Medical Home Portal

Select Language
Powered by Google Translate

Caring and Advocating for Children and Youth

- Diagnoses & Conditions
- Newborn Disorders
- For Parents & Families
- For Physicians & Professionals
- RI Services Directory
- Other Resources



About the Portal

The **Medical Home Portal** is a unique source of reliable information about children and youth with special health care needs (CYSHCN), offering a "one-stop shop" for their:

Partnering with the Portal

The **Medical Home Portal** also partners with five other states to offer their residents information about local community and professional service providers, found in the Services Directory tab and integrated into the

What is Medical Home?

The Medical Home approach to caring for children focuses on the patient, his/her family, and their community and aims to improve outcomes related to health, relationships, education, and abilities...

Sections

About the MHP

Diagnosis and Conditions

Newborn Disorders

Advocating and Caring for CYSHCN

Families with Care Notebook

Professionals with Common Issues

RI Service Directory



Our Mission

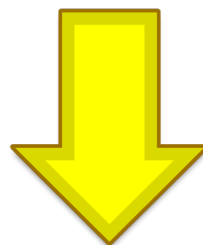
To assist and support professionals and families in working together (the Medical Home model) to care and advocate for CYSHCN by providing reliable and useful information about their conditions and caring for them and knowledge of valuable local and national services and resources

<https://www.medicalhomeportal.org/about-portal>

MISSION

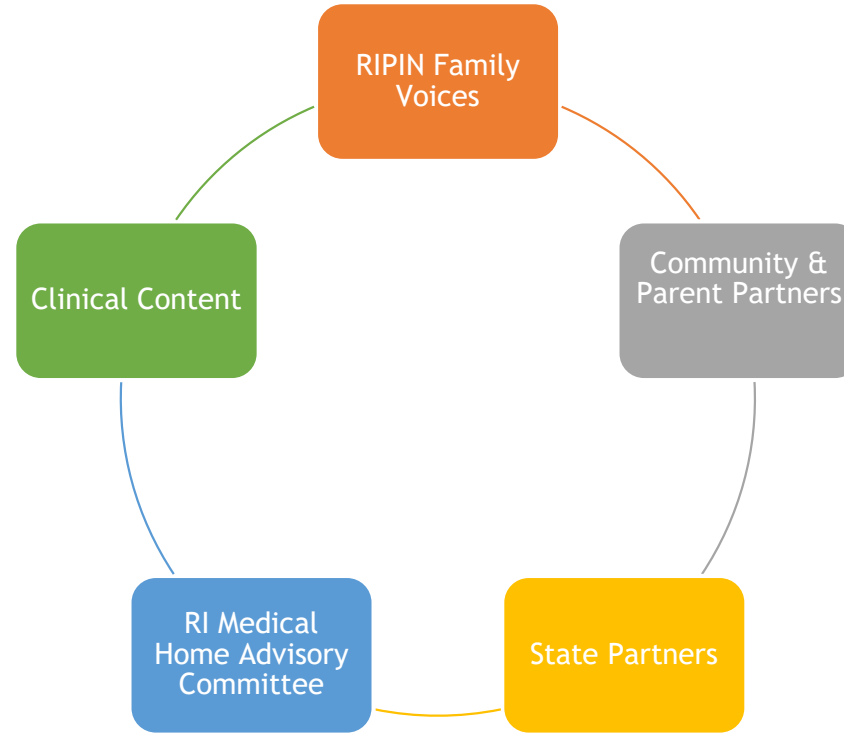
MCH Priorities for 2020-2024

Ensure effective care coordination for children and youth with special healthcare needs

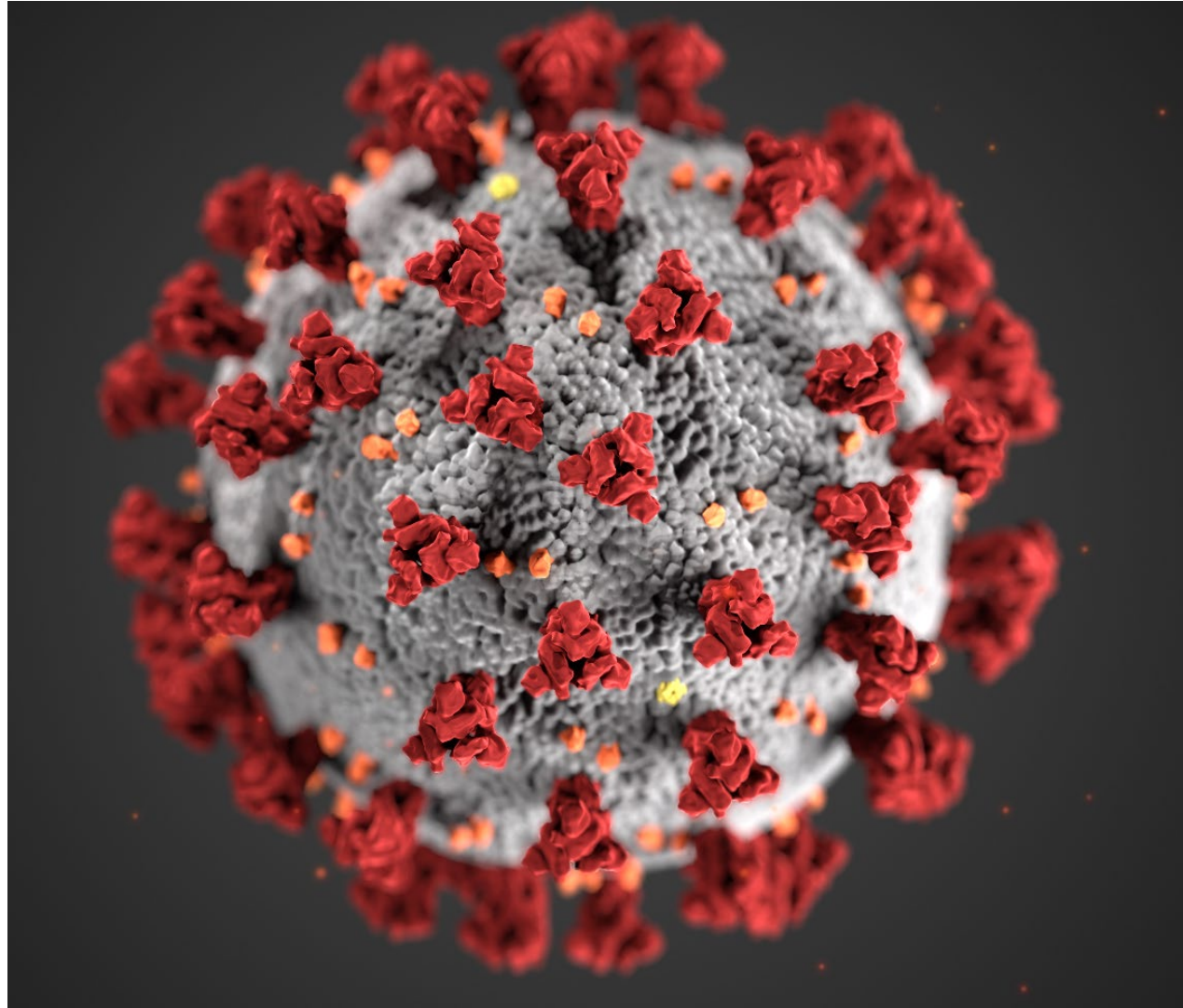


Initial Strategies:

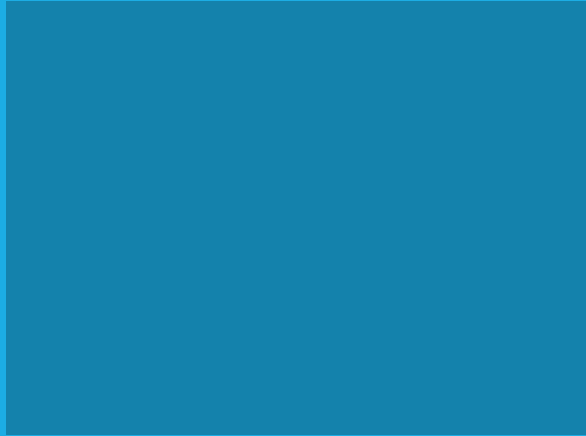
- Promote Patient Centered Medical Homes for CSHCN.
- Promote a web-based application to address effective care coordination in the Medical Home Portal.



Content Connections



COVID 19



Short on Time?

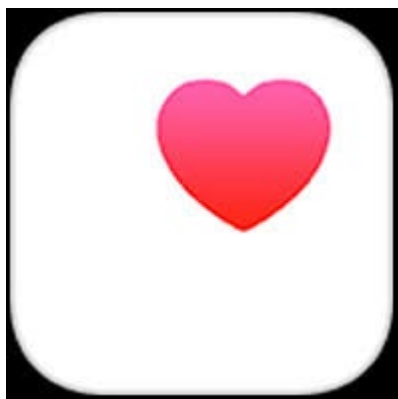
- Care Professionals Video



CHALLENGES OF CARE COORDINATION

Updated Family Care Notebook

- Care Notebook Includes Apps
- Spanish is in the works



RI Directory Improvements

Pediatric and Family Practice
list from Kidsnet



Patient Centered Medical Homes
from Care Transformation
Collaborative CTC

+
portal.org/services/lists/list/cs3l2g0q9pkt6qtofak0idh662

Home > RI Services Directory > My Lists > Case Study #1 ADHD

Case Study #1 ADHD (8)

CHADD of RI (Children and Adults with Attention Deficit Hyperactivity Disorder)	Edit
RI Phone: 401-369-0045 www.chadd.net/chapter/810	

Neuropsychological Assessment

Children's Neurodevelopment Center, Hasbro Children's Hospital	Edit
335R Prairie Avenue Providence, RI 02905 Phone: 401-444-5685 www.lifespan.org/centers-services/childrens-neurodevelopment-center	

Parent/Family Education

Rhode Island Parent Information Network (RIPIN), Rhode Island Parent Information Network	Edit
300 Jefferson Blvd, Suite 300 Warwick, RI 02888 Phone: 401-270-0101 www.ripin.org	

Bradley Hospital, Bradley Hospital-A Lifespan Partner	Edit
1011 Veterans Memorial Parkway East Providence, RI 02915 Phone: 401-432-1000 www.bradleyhospital.org/	

Pediatric Neurology

Ana C. Albuja Ponce, MD, Children's Neurodevelopment Center	Edit
335R Prairie Avenue Suite 1A Providence, RI 02905 Phone: 401-444-5685 www.lifespan.org/providers/ana-albuja-ponce-md	

CUSTOMIZABLE LIST

Services Directory

Print Share Get Me

Suggest a New Provider

* Indicates required field

Please provide your name and email for any follow-up questions we may have.

Your Name *

Your Email *

Notes

Please enter as much information about the service provider as you can.

Name *

Organization Name

Address

Select State

Zip

Phone

Crisis Line

Submit

SUGGEST OPTIONS

Need a Brochure or Magnet ?

The Medical Home Portal is an online resource for Rhode Island families, healthcare providers, and caregivers. It provides reliable information to help you care and advocate for children and youth with special healthcare needs.

To access the portal, visit:
<https://ri.medicalhomeportal.org>



FAMILY VOICES



For more information, visit
<https://ri.medicalhomeportal.org>
or call 401-222-5960 / RI Relay 711.

Medical Home Portal



A resource for families and professionals caring for children and youth with special healthcare needs



Diagnoses and Conditions

Find information on a wide range of conditions, including:

- Asthma
- Attention Deficit Hyperactivity Disorder (ADHD)
- Anxiety Disorders
- Autism Spectrum Disorder
- Childhood Obesity
- Depression
- Down Syndrome
- Hearing Loss
- Seizures and Epilepsy
- Spina Bifida
- and many more

Rhode Island Services Directory

Find contact information for local service providers or create and share your own lists.



For Parents and Families

Raising children is rewarding, but also challenging. When your child has special healthcare needs, this job can feel even more demanding. The Rhode Island Medical Home Portal is here to help!

Get Resources

The Portal provides resources that can help you become a more effective partner in your loved one's care. Learn more about:

- Early childhood services
- Education and schools
- Navigating transitions
- Financing medical needs
- Finding a supportive community
- Letters of medical necessity
- Understanding health insurance and Medicaid, including the Katie Beckett program
- and much more!

Build a Care Notebook

A Care Notebook can help you keep track of your child's care and improve communication with your child's care team. Find forms and tips for building a Care Notebook in the *Parents and Families* section of the Medical Home Portal.



For Professionals

The Medical Home Portal provides information, tools, and resources to help primary care providers, care coordinators, Community Health Workers, and other healthcare professionals:

- Improve care and outcomes for children and youth with special healthcare needs.
- Provide patient and family-centered care.
- Connect families to information and additional resources in the community.

Find up-to-date resources such as:

- Best practice guidelines and tools
- National diagnoses prevalence list
- Newborn disorders and screening information
- Rhode Island pediatric specialists
- Links to clinical trials
- Information and resources in other languages



Comments or Questions?



Send to:

Rhode Island Department of Health

Office of Special Needs

Division of Community Health and Equity

Colleen Polselli, Program Manager

Via Email to : Kathleen.Kuiper@health.ri.gov

401-222-5887



MLPB

ADVANCING HEALTH
THROUGH JUSTICE

Marsophia Ducheine

Medical-Legal
Partnership Boston

Strength-based Screening for Health-related Social Needs Part 2: Theory to Practice

Next NCM/CC Best Practice Sharing Meeting

November 16, 2021,
8:00-9:30AM

**You must register
for this event**

The Aging Brain: Signs & Symptoms of Cognitive Impairment

Tuesday, November 16, 2021 | 8:05-9:05am

Click Here
to **REGISTER**

Presented by:



John Stoukides, MD, RPh

Director of Geriatrics, Roger
Williams Medical Center; Medical
Director, RI Mood & Memory
Research Institute; Medical
Director, Roger Williams Senior
Health Care Associates

Cognitive Decline Isn't Inevitable.

According to the CDC, up to 40% of dementia cases may be prevented or delayed. There are lifestyle factors within one's control that change risk of developing dementia. Primary care professionals can play a critical role in the assessment and modification of these risk factors.

After completing this webinar, participants will be able to identify risk factors for cognitive decline and list methods to modify those risk factors.

CONTINUING EDUCATION

Nursing: This activity has been submitted to the Northeast Multistate Division (NEMSD) for approval. The Northeast Multistate Division is accredited as an Approver of continuing nursing education by the American Nurses Credentialing Center's Commission on Accreditation.

Social Work: This activity has been submitted to the Rhode Island College, School of Social Work for approval.

Care Coordination Survey Now Open: Share Your Feedback with State Leaders

Share your experience with the Rhode Island Department of Health to help improve systems of care for children and youth with special health care needs.

[Complete the Survey \(English\) \[nam11.safelinks.protection.outlook.com\]](https://nam11.safelinks.protection.outlook.com)

[Responde la encuesta \(español\) \[nam11.safelinks.protection.outlook.com\]](https://nam11.safelinks.protection.outlook.com)

Resources

- [A Strength-based approach to screening](#)
- [2021 Rhode to Wellness Challenge](#)
- [RI World Diabetes Day \(RIWDD\)](#)



ADVANCING INTEGRATED HEALTHCARE

**Thank you
Stay Healthy and Safe**

NEXT MEETING: NOVEMBER 16, 2021