

CARE TRANSFORMATION COLLABORATIVE RHODE ISLAND (CTC-RI)

Rates for Contract Adjudication

April 15, 2020



Notes (1 of 2)

- Analysis included data for:
 - Blue Cross Blue Shield of Rhode Island (BCBSRI)
 - Neighborhood Health Plan of Rhode Island (NHPRI)
 - Tufts
 - UnitedHealthcare
 - UnitedHealthcare (New England)
- Onpoint's standard attribution method was used, which includes a 24-month look-back period and CMS Evaluation and Management (E&M) codes
 - Urgent care visits were excluded from attribution

Notes (2 of 2)

- Additional exclusions for adult analyses
 - Maternity and behavioral health claims
 - Members attributed to pediatric providers
 - Children 17 years old and younger
- Additional exclusions for pediatric analyses
 - Maternity and behavioral health claims
 - Newborns

CTC Cohort 5: 15 Practice Sites

- A to Z Primary Care
- Brookside Medical Associates
- Charter Care Medical Associates (Prospect Charter Care Physicians, Inc.)
- Comprehensive Community Action Program – Primary Care Partners
- East Bay Community Action Program – Barrington
- Gilbert Teixeira (Massasoit Internal Medicine)
- Lincoln Primary Care
- Michelle C. VanNieuwenhuize, MD, LLC
- Nardone Medical (Providence)
- Ocean State Primary Care of Coventry
- Ocean State Primary Care Center of Westerly
- Providence Community Health Centers, Inc. – Randall Square
- Richard E. VanNieuwenhuize, MD, LLC
- Robert Carrellas, MD
- Wayland Medical Associates

PCMH Kids Cohort 2: 11 Practice Sites

- Aquidneck Pediatrics
- Barrington Family Medicine
- Barrington Pediatric Associates
- Children's Medical Group (University Pediatrics)
- Coastal Medical, Inc. – Bald Hill Pediatrics
- Coastal Medical, Inc. – Toll Gate Pediatrics
- Cranston (Park) Pediatrics
- East Side Pediatrics
- Kingstown Pediatrics
- Northern RI Pediatrics
- Thomas Puleo

ED Visits per 1,000 Member Months Adults

Group	July 2017 – June 2018	July 2018 – June 2019
Cohort 5	38.0	36.8
Comparison	36.2	34.2

IP Admissions per 1,000 Member Months Adults

Group	July 2017 – June 2018	July 2018 – June 2019
Cohort 5	6.7	7.4
Comparison	8.3	8.0

ED Visits per 1,000 Member Months Children

Group	July 2017 – June 2018	July 2018 – June 2019
Cohort 2	25.5	25.2
Comparison	29.6	27.1

IP Admissions per 1,000 Member Months Children

Group	July 2017 – June 2018	July 2018 – June 2019
Cohort 2	0.6	0.7
Comparison	0.7	0.7

CTC Cohort 5 & Comparison

Rate per 1,000 Member Months

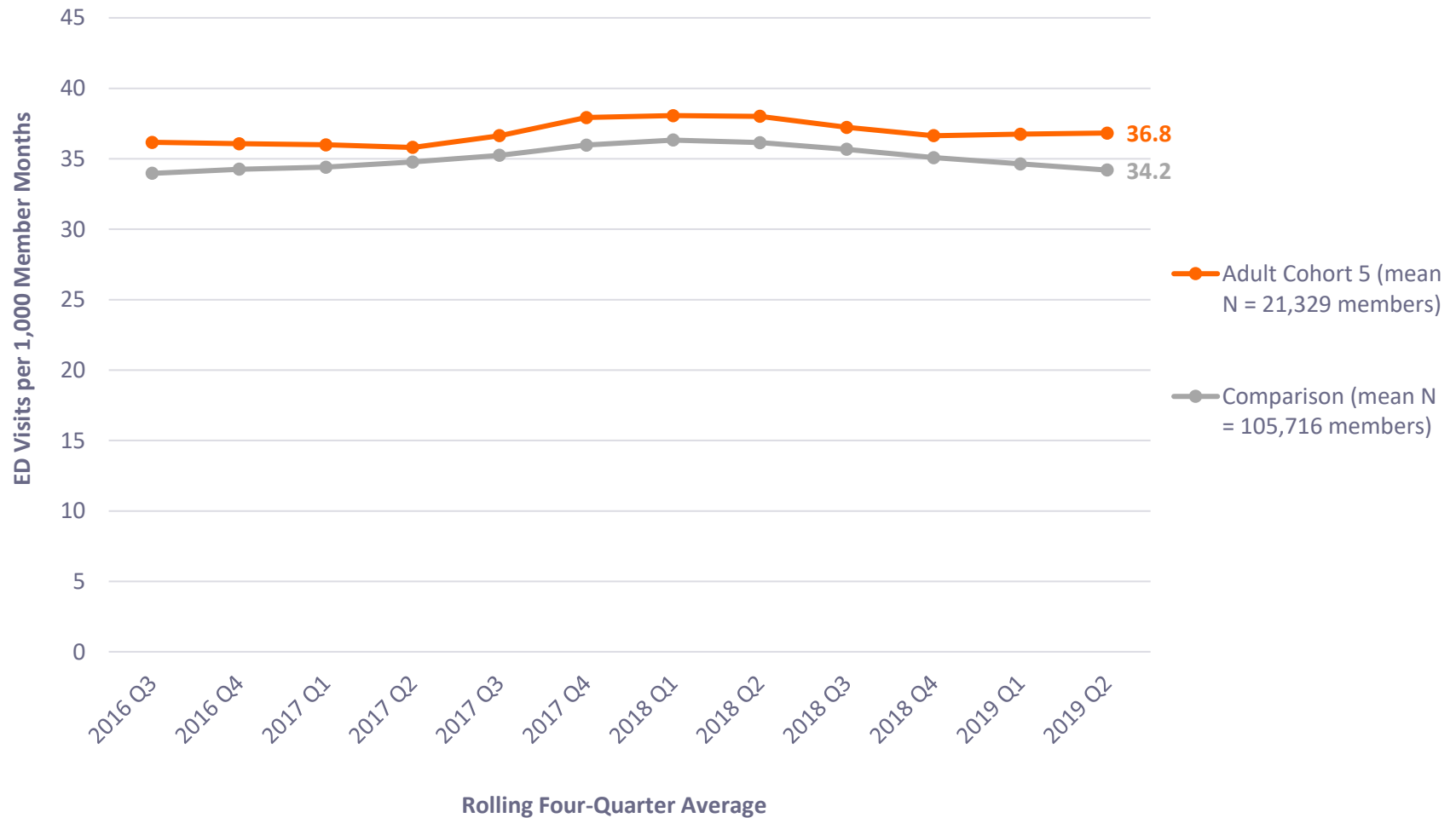
Group	July 2017 – June 2018 (A)	July 2018 – June 2019 (B)	Difference (2017–2019) (B-A)	% Difference (2017–2019)
Emergency Department Visits				
(1) Cohort 5	38.0	36.8	-1.2	-3.1%
(2) Comparison	36.2	34.2	-1.9	-5.3%
Difference (1–2)			0.7	2.2%
Inpatient Discharges				
(1) Cohort 5	6.7	7.4	0.7	10.1%
(2) Comparison	8.3	8.0	-0.3	-3.4%
Difference (1–2)			-1.0	13.5%

PCMH Kids Cohort 2 & Kids Comparison

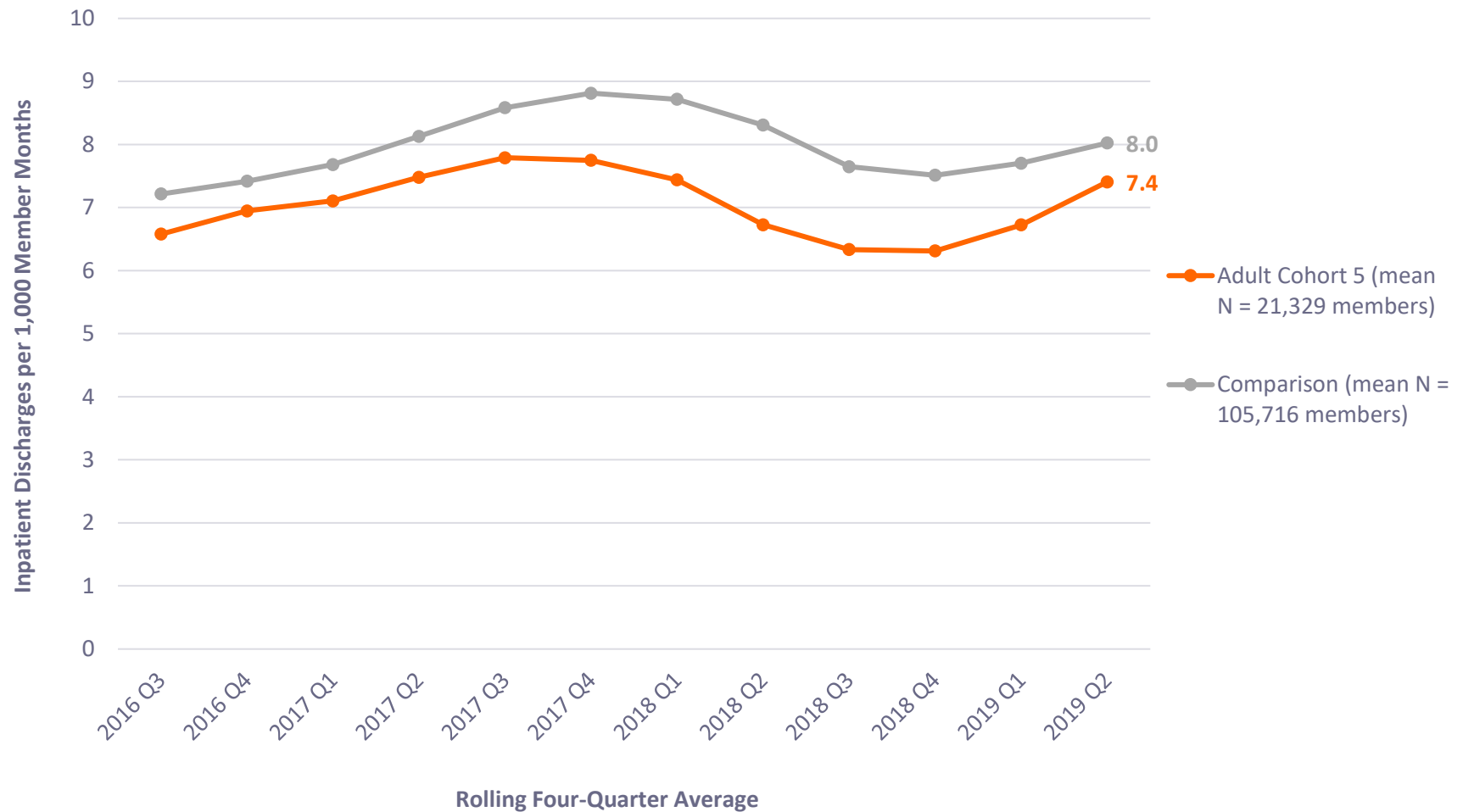
Rate per 1,000 Member Months

Group	July 2017 – June 2018 (A)	July 2018 – June 2019 (B)	Difference (2017–2019) (B-A)	% Difference (2017–2019)
Emergency Department Visits				
(1) Kids Cohort 2	25.5	25.2	-0.3	-1.2%
(2) Kids Comparison	29.6	27.1	-2.5	-8.4%
Difference (1–2)			-2.2	7.2%

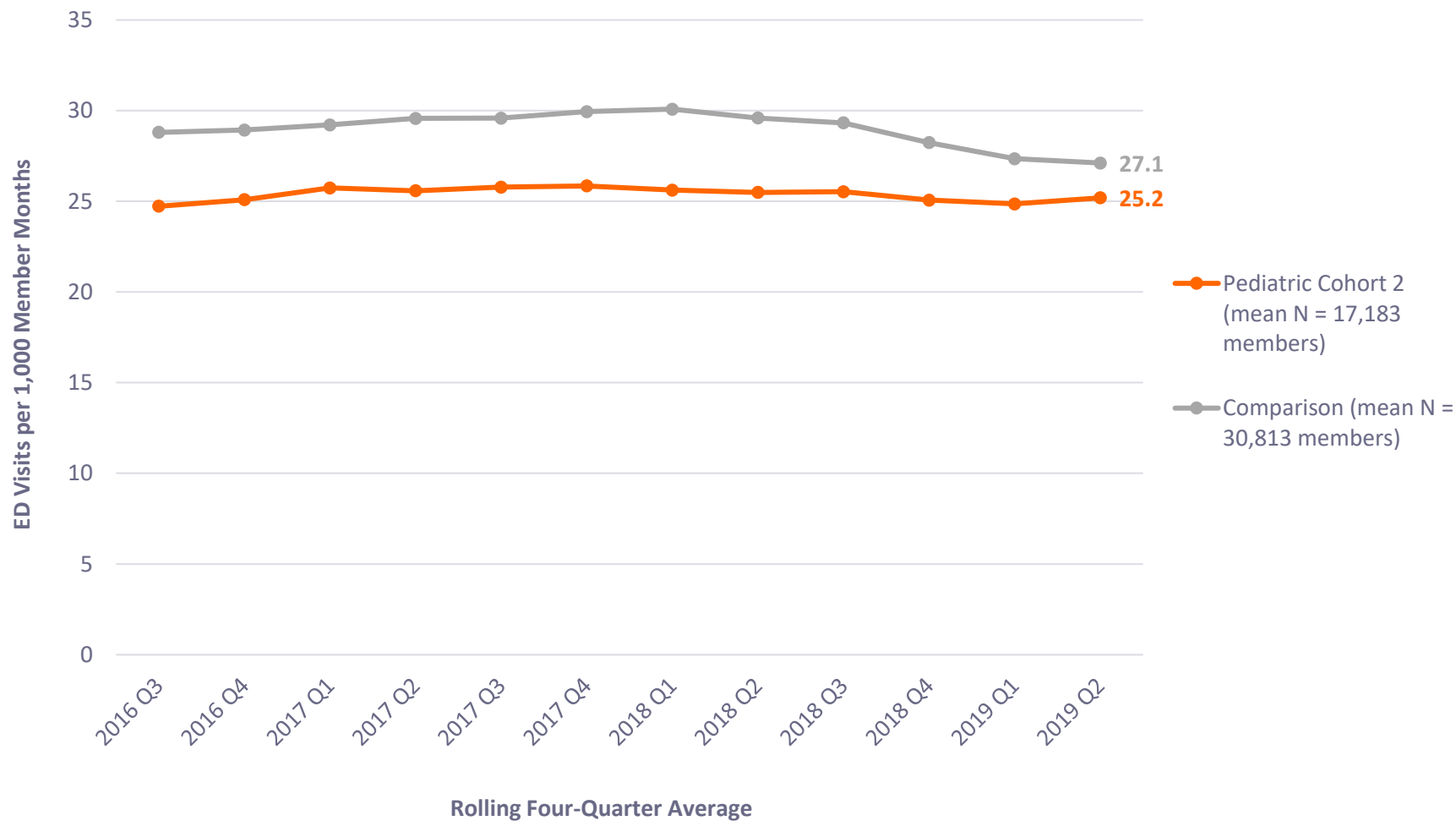
ED Visit Rate – Adults



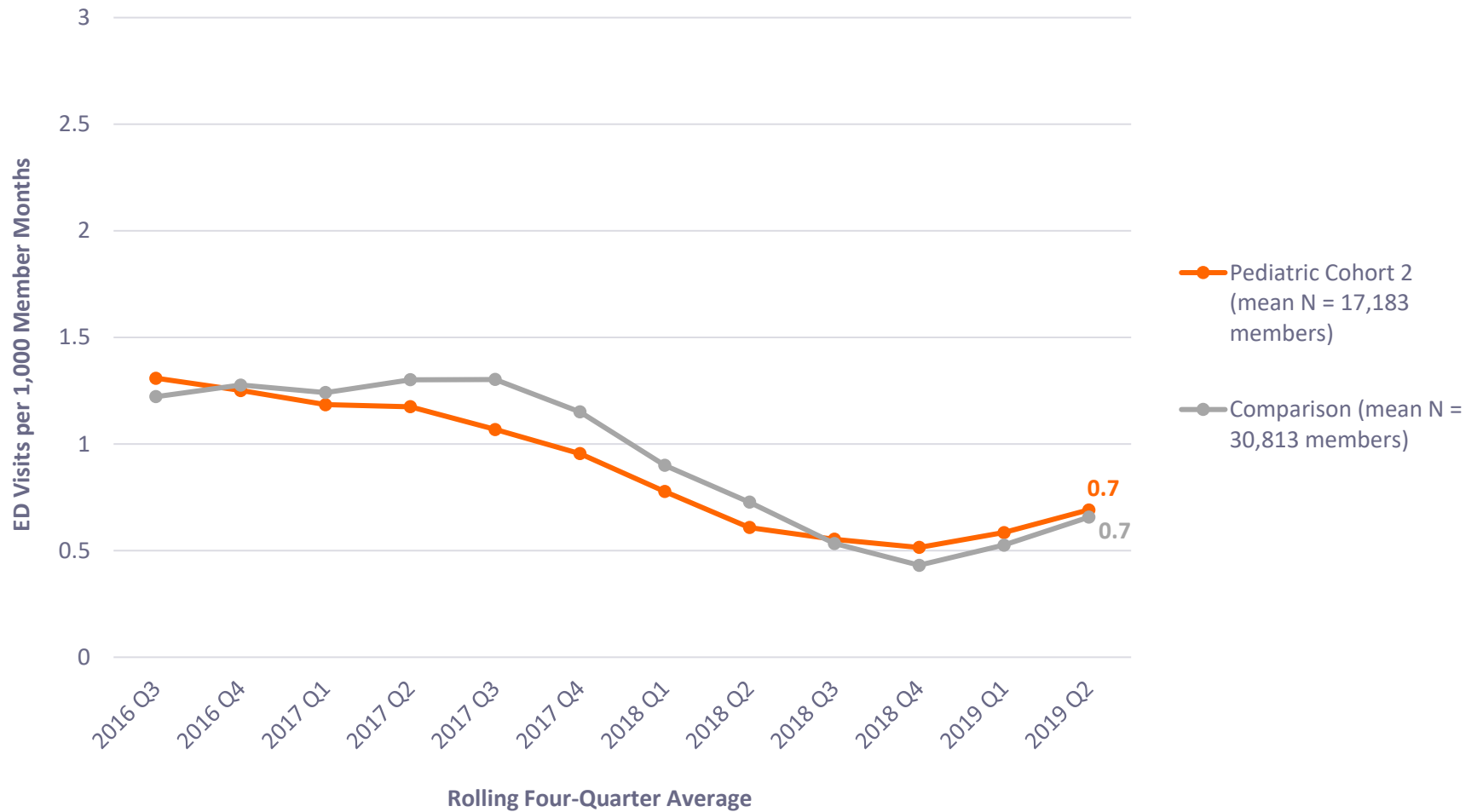
Inpatient Admission Rate – Adults



ED Visit Rate – Children



Inpatient Admission Rate – Children



Supplemental Cohort Demographics

July 2018 – June 2019

Adults

Cohort	Member Months	Gender Percentages		Average Age (Years)
		Male	Female	
Cohort 5	233,268	49%	51%	50
Comparison	1,137,765	43%	57%	50

Children

Cohort	Member Months	Gender Percentages		Average Age (Years)
		Male	Female	
Cohort 2	201,210	51%	49%	9
Comparison	341,247	51%	49%	10